



Introducing the New ILDS

Illinois Library Delivery Service

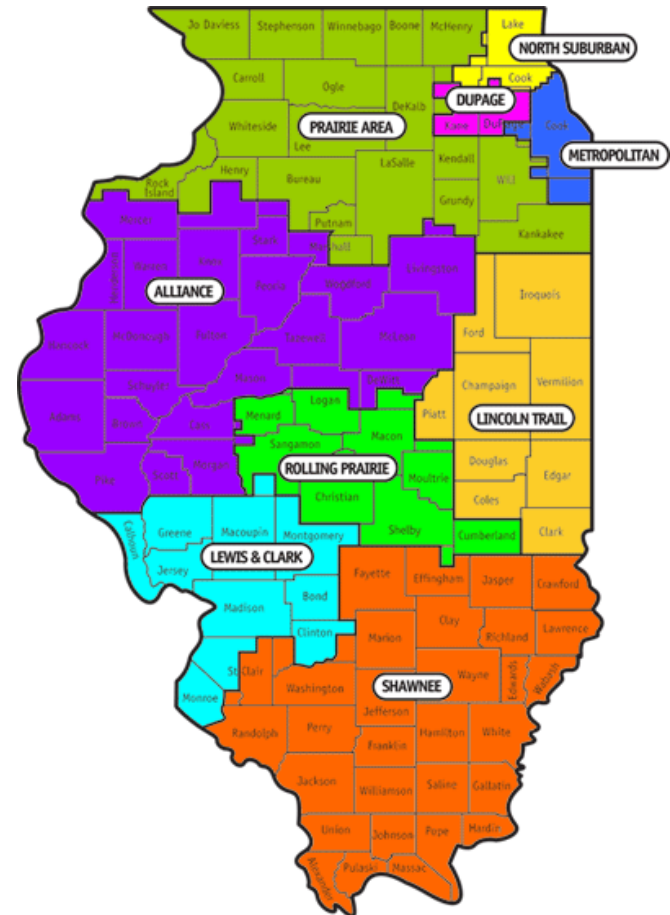


Overview of ILDS

- Illinois' Regional Library Systems (for you – PALS) provide delivery to and between their members.
- ILDS is the delivery service moving interlibrary loan material between the I-Share libraries of CARLI, the Illinois State Library and the Regional Library Systems. ILDS is funded by the Illinois State Library.
- Beginning January 2, 2008, ILDS changes with delivery to 130+ CARLI sites, www.illinoisdelivers.net/memlist.html lists the sites.
- Regional Library Systems (including all three PALS service centers) continue serving as ILDS “hubs” for materials traveling to non-CARLI libraries in other regional systems

Regional Library Systems

- Illinois has 9 Regional Library Systems, with 11 buildings
- Chicago Public Library serves as a Public Library System for Chicago
- All 12 of these buildings will still be ILDS destination locations





Changes? What changes?

After January 2nd :

- ➔ ILDS (CARLI) destination libraries will:
 - ➔ Sort and bag materials by destination

- ➔ Non-ILDS destination libraries will:
 - ➔ Use new Routing Label to direct material via ILDS
 - ➔ Send the material to PALS for shipping to the destination library.



PALS Delivery

- ➡ As of January 2, 2008, PALS will not deliver to our Illinois academic library members that will now be ILDS destination libraries.
- ➡ The only exception to this is that PALS will continue to deliver to Black Hawk College and Highland Community College because they are PrairieCat fully participating libraries.



New ILDS Label

The new ILDS routing label is available in PDF format. Libraries can download the label from several locations:

- The PALS website
<http://www.palsnet.info/services/delivery/default.asp>
- The Illinois Library Systems website
<http://www.illinoislibrarysystems.info/>
- WebJunction Illinois

FINAL DESTINATION*					
<i>*Do not circle the code to be circled below. For materials going to non-ILDS libraries, write the destination library's full name above, and circle their system's ILDS code.</i>					
NOTES FROM _____					
S CIRCLE OR HIGHLIGHT ONE ILDS DESTINATION CODE					
To Systems or ILLINOIS LIBRARIES		To ILDS Libraries			
ALS	ADL	FLD	KCC	NPU	SJN
CPL	ALP	GRN	KEN	NUH	SRC
DLS	ARG	GSU	KIS	NWU	SSC
LCL	ARU	HCD	KNX	OAK	SVC
LTL	AUG	HIC	KSC	ONU	SWI
MSL	BEN	HRT	LAC	PRC	SWU
NSL	BHC	ICC	LCC	PRK	TIU
PAC	BLC	ICD	LCN	QCY	TRN
PAR	BRA	IEF	LEW	RCC	TRT
PAS	BRN	IEL	LFC	RKC	UCH
RPL	CLC	IEO	LKC	RLC	UIC
SHL	COD	IEW	LLC	RMC	UIH
	COL	IIA	LUC	ROB	UIP
	CON	IID	MBI	ROS	UIR
	CSC	IIT	MCK	ROU	UIS
	CSP	ILC	MHC	RSH	UIU
	CSU	IMS	MIL	RVC	UNI
	CTU	ISL	MMC	SAI	USF
	DAC	ISU	MON	SCC	VCM
	DOM	IWC	MVC	SCI	WCC
	DFU	IWU	MWU	SEI	WHE
	ECC	JAL	NBT	SFM	WIU
	EIU	JKM	NBY	SHC	WRH
	ELM	JOL	NCC	SIC	WWC
	ERI	JUD	NEI	SIE	SJN
	ERK	JWC	NIU	SIM	SRC
	EWU				

ILDS
WWW.ILLINOISDELIVERS.NET

ILDS codes defined at
<http://www.illinoisdelivers.net>

For a directory of all
 Illinois libraries
 see:
<http://www.illinoislib.org>

December 2007



When to use the label

- When sending an interlibrary loan item from a non-ILDS library to an ILDS library within PALS → Polo Public Library sending an item to Kishwaukee College Library.
- When sending an interlibrary loan item a PALS non-ILDS library to another non-ILDS library in a different Library System → Moline Public Library sending an item to Arlington Heights Public Library.
- When sending an interlibrary loan item to an ILDS (CARLI) library → Joliet West High School lending a book to Bradley University.
- When returning an interlibrary loaned item to its ILDS home → Trinity Medical Center returning a book to Eastern Illinois University. Although the ILDS libraries will continue their practice of including a return label when they send the book to you, sometimes a label will need to be added.



Completing the Label

Library staff completes the label by indicating:

1. Final Destination → Clearly print the name of the library receiving the item
2. From → Clearly print your library's name
3. Circle → The shipping code of the ILDS destination. If sending to a non-ILDS site, you circle the receiving library's Regional Library System. Not sure about the ILDS Destination? Check ELI at <http://eliillinois.org/>

FINAL DESTINATION*					
<i>*If shipping to a non-ILDS site, please circle the shipping code of the receiving library's Regional Library System. If shipping to an ILDS site, please print the name of the library's Regional Library System.</i>					
NOTES		FROM			
5. CIRCLE OR HIGHLIGHT ONE ILDS DESTINATION CODE					
To Systems or ILDS Destination		To ILDS Libraries			
ALS	ADL	FLD	KCC	NPU	SJN
CPL	ALP	GRN	KEN	NUH	SRC
DLS	ARG	GSU	KIS	NWU	SSC
LCL	ARU	HCD	KNX	OAK	SVC
LTL	AUG	HIC	KSC	ONU	SWI
MSL	BEN	HRT	LAC	PRC	SWU
NSL	BHC	ICC	LCC	PRK	TIU
PAC	BLC	ICD	LCN	QCY	TRN
PAR	BRA	IEF	LEW	RCC	TRT
PAS	BRN	IEL	LFC	RKC	UCH
RPL	CLC	IEO	LKC	RLC	UIC
SHL	COL	IJA	LUC	ROB	UIP
	CON	IID	MBI	ROS	UIR
	CSC	IIT	MCK	ROU	UIS
	CSP	ILC	MHC	RSH	UIU
	CSU	IMS	MIL	RVC	UNI
	CTU	ISL	MMC	SAI	USF
	DAC	ISU	MON	SCC	VCM
	DOM	IWC	MVC	SCI	WCC
	DPU	IWU	MWU	SEI	WHE
	ECC	JAL	NBT	SFM	WIU
	EIU	JKM	NBY	SHC	WRH
	ELM	JOL	NCC	SIC	WWC
	ERI	JUD	NEI	SIE	SJM
	ERK	JWC	NIU	SIM	SRC
	EWU				

ILDS
WWW.ILLINOISDELIVERS.NET

ILDS codes defined at <http://www.illinoisdelivers.net>

For a directory of all Illinois libraries see: <http://www.illinoisdelivers.net>

December 2007



Remember....

When in doubt about the library's ILDS destination, look up the library.

➔ ILDS:

<http://www.illinoisdelivers.net/memlist.html>

➔ Every Library in ILLINET (ELI):

<http://www.eliillinois.org/>

Don't forget to attach the routing label to the item.

Please use a non-permanent method to avoid damaging the item.

Then put the labeled book into your library's container for PALS to collect.

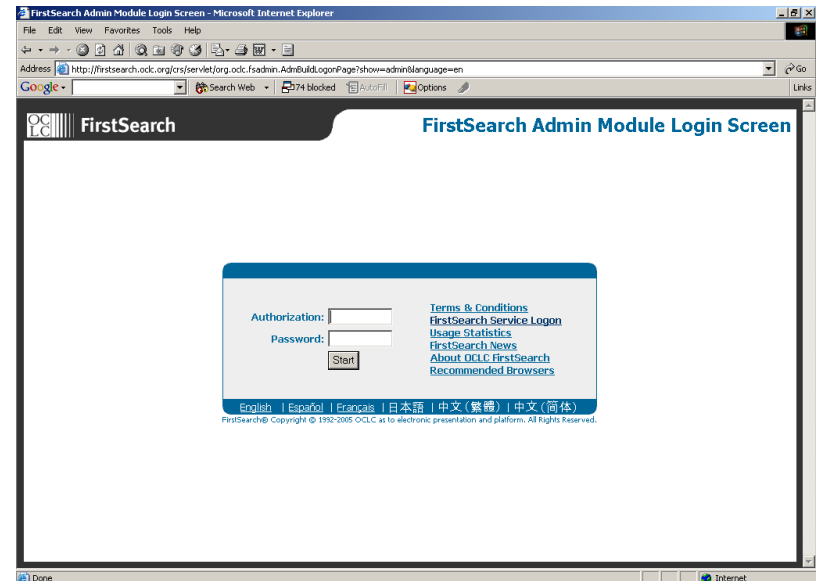


OCLC Constant Data and ILDS Destination Codes

Update your library's OCLC constant data to show the proper PALS service center/delivery hub address as the ILDS destination. (Coal Valley = PAC; Rockford = PAR; Shorewood = PAS)
To access your library's constant data, access your FirstSearch Administrative Module at

<http://firstsearch.oclc.org/admin>.

Log in with your library's FirstSearch administrative authorization and password.





Click on the Resource Sharing tab

Home [OCLC FirstSearch Administrative Module] - Mozilla Firefox

File Edit View History Bookmarks Tools Help

http://firstsearch.oclc.org/crs/servelet/org.oclc.fsdadmin.AdminBuildAccountInfo;jsessionid=6617842810E972FDE08F4

Usage Statistics WorldCat Services WorldCat Registry WorldCat.org Administrative Module Policies Directory

WorldCat Services ADMINISTRATIVE MODULE

Search Help
Comments
Site Map
Print Your Settings
Exit

Home Authentication/Access Resource Sharing Linking Interface Display

FirstSearch Authorization: 100109250 | Symbol: IFK

Home

Welcome to the Administrative Module [Welcome](#)

Highlight your investment, improve your user's experience and provide seamless access to your library's resources through the links below.

- Increase your library's visibility and reinforce the value of library provided services. [More](#)
 - Add your logo to strengthen your library's position among your users and reinforce who is providing this access. Go to [Your Library](#).
- Connect users to actual resources from your library collection. [More](#)
 - Empower your users to identify and obtain needed items from your collection in FirstSearch and in familiar search engines such as Yahoo! Search and Google. Go to [Web Library Catalogs](#).
- Integrate full-text options from other sources. [More](#)
 - Ensure that your library users reach all the resources available in your library collection with "click-through" access to online resources. Go to [OpenURL Links](#).
- Identify resources from your library partners. [More](#)
 - Guide your patrons to resources from partner libraries. Go to [Custom Library Groups](#).
- Enable user-initiated interlibrary loan to increase productivity and save time. [More](#)
 - OCLC Resource Sharing or e-mail will streamline the creation and delivery of borrowing requests to potential lenders and help your library users obtain their resources faster and more efficiently. Go to [ILL Processing](#).
- Authenticate your users for seamless access and account security. [More](#)
 - Facilitate automatic logon from local or remote locations. Go to [IP-Address Recognition](#).

Institution	
Symbol:	IFK
Name:	PALS - COAL VALLEY SERVICE CTR

Per Search account (this authorization's searches)

Searches Remaining:	0
Expiration Date:	2008-06-13
Low Search Notification:	Low Search Notification

Subscription account

Done



On the Resource Sharing page, pull down the menu under **Staff ILL Settings** and choose **Constant Data Records**.

The fields with the ILDS code information in them are the **Ship Via** field under Borrowing Library Information and the **Return Via** field under Lending Information.

Ship Via: Put either **PAC** or **PAR** or **PAS** as the ILDS destination code. Make sure you don't list only the ILDS code; include another shipping method as out-of-state libraries won't know what ILDS means!

The screenshot shows the WorldCat Administrative Module interface. The 'Staff ILL Settings' menu is open, and 'Constant Data Records' is selected. The 'ILL Access' section shows 'ILL Access' set to 'On' and 'ILL Button Display Options' set to 'Display always'. The 'ILL Settings for Databases' table is visible below.

Database	OCLC ILL Review File	OCLC ILL Direct Request Profile	ILL via E-mail	ILL Access off
ABL_INFORM	<input type="radio"/>	<input type="radio"/>	<input type="radio"/>	<input type="radio"/>
AGRICOLA	<input type="radio"/>	<input type="radio"/>	<input type="radio"/>	<input type="radio"/>
AHSearch	<input type="radio"/>	<input type="radio"/>	<input type="radio"/>	<input type="radio"/>
AllPressIndex	<input type="radio"/>	<input type="radio"/>	<input type="radio"/>	<input type="radio"/>
AllPressIndexArchive	<input type="radio"/>	<input type="radio"/>	<input type="radio"/>	<input type="radio"/>
ArticleFirst	<input type="radio"/>	<input type="radio"/>	<input type="radio"/>	<input type="radio"/>
BasicBIOSIS	<input type="radio"/>	<input type="radio"/>	<input type="radio"/>	<input type="radio"/>

Don't forget to update the **Return Via:** section and to click on the **Save Changes** button!



Policies Directory – OCLC

From the FirstSearch Administration module, select **Policies Directory** from the black tool bar (uppermost, rightmost).

Select **My Units**, then the tab **Policies**, choose **Copies**. Scroll to the **Fees** section. Choose the edit for that section.

In the **Delivery** line, change the line to read something like:

Illinois Library Delivery Service --
Destination code: PAC, PAR or PAS

Remember , include another shipping method as out-of-state libraries don't use ILDS

Don't forget to update the **Loans** section and to click on the **Save Changes** button!